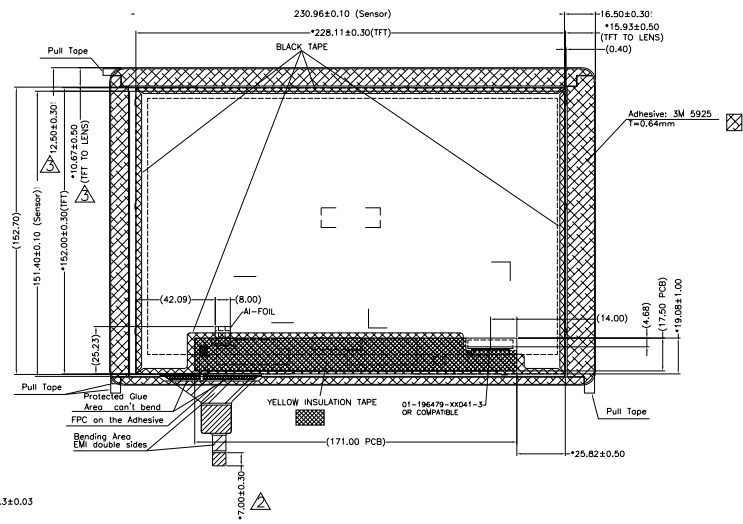
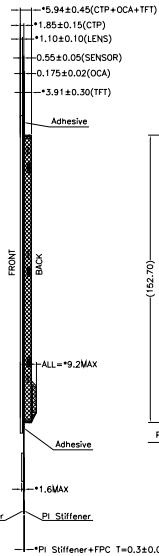
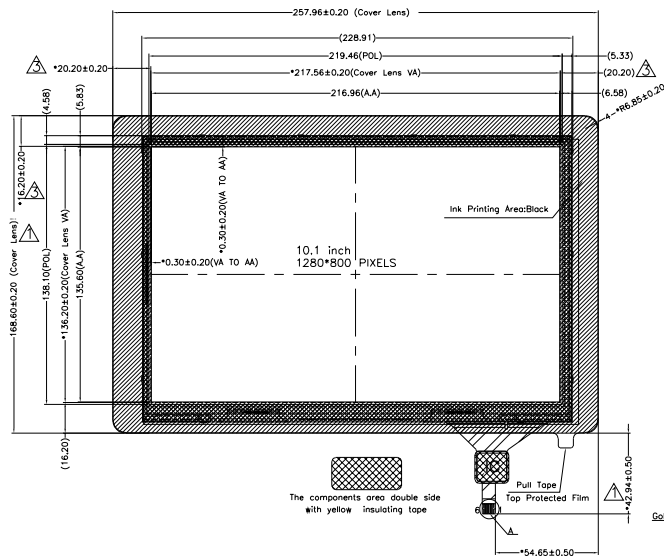
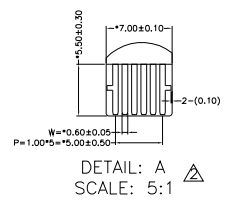


ITEM	PARAMETERS	ITEM	PARAMETERS	ITEM	PARAMETERS	ITEM	PARAMETERS
DISPLAY TYPE	IPS/NORMAL BLACK	VIEWING DIRECTION	FREE	POWER SUPPLY FOR TFT	2.5V (VDD)	TFT IC/CTP IC	EK79202B OR COMPATIBLE/ GT19271
RESOLUTION (H*V)	10.1" 1200*800 PIXELS	OPERATION TEMPERATURE	-20°C TO +70°C	POWER SUPPLY FOR CTP	3.3V (VDD)	BACKLIGHT	EDGE,WHITE
POLARIZER TYPE	TRANSMISSIVE	STORAGE TEMPERATURE	-30°C TO +80°C	CTP COORDINATE ORIGIN	TOP LEFT CORNER	CONNECTOR	01-196479-XX041-3 OR COMPATIBLE



TFT PIN DEFINITION

PIN NO	SYMBOL
1	NC
2	VDD
3	VDD
4	NC
5	NC
6	NC
7	GND
8	RXIN0-
9	RXIN0+
10	GND
11	RXIN1-
12	RXIN1+
13	GND
14	RXIN2-
15	RXIN2+
16	GND
17	RXCLK-
18	RXCLK+
19	GND
20	RXIN3-
21	RXIN3+
22	GND
23	NC
24	NC
25	GND
26	NC
27	NC
28	NC
29	AVDD
30	GND
31	LED-
32	LED-
33	NC
34	NC
35	VGL
36	NC
37	NC
38	VGH
39	LED+
40	LED+



CTP PIN DEFINITION

PIN No.	SYMBOL
1	SDA
2	SCL
3	VCC
4	nRST
5	nINT
6	GND

NOTE:  
1.Main board on SDA and SCL pull up,but INT cannot pull up

REV.	D	CUSTOMER NO.	
SCALE	FIT	UNIT	mm
ROHS/REACH COMPLIANT	YES	CUSTOMER'S APPROVAL	
UNMARKED TOLERANCE	±0.3		